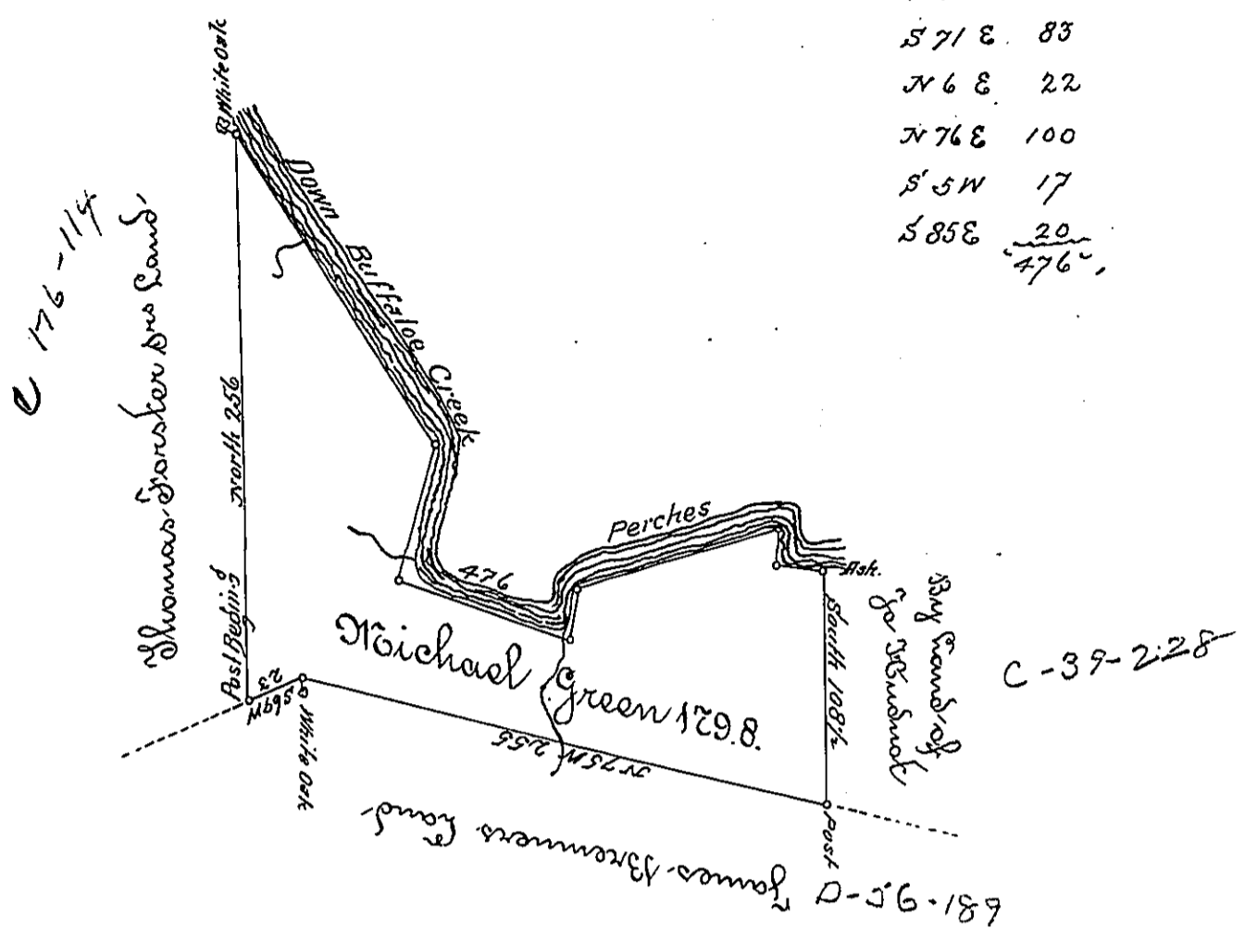


Courses and Distances
Down Buffalo Creek

S 32 E	169
S 16 W	65
S 71 E	83
N 6 E	22
N 76 E	100
S 5 W	17
S 85 E	<u>20</u>
	476



The Draught of a Tract of Land called ... situate on Buffalo Creek in the County of Berks containing One Hundred Seventy Nine Acres 130 Perches with the usual Allowance of Six Acres & Cent. for Roads. Survey'd the 12th Day of August Anno Dom: 1769. In Pursuance of an Order of Survey to Michael Green Bearing Date at Philad^a the 3^d Day of April Anno Dom: 1769 and numbered 1462.

To John Lukens S. G. }
of Pennsylvania }

Wm. Mackay D. S.

IN TESTIMONY that the above is a copy of the original remaining on file in the Department of Internal Affairs of Pennsylvania, made conformably to an Act of Assembly approved the 16th day of February, 1833. I have hereunto set my Hand and caused the Seal of said Department to be affixed at Harrisburg, this

Seventh day of January 1896.

James W. Latta
Secretary of Internal Affairs.